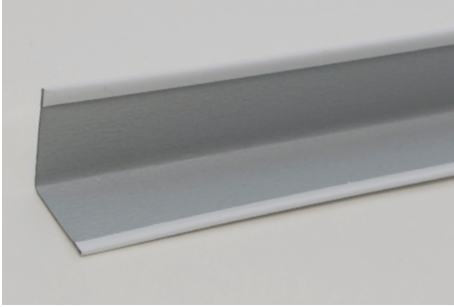
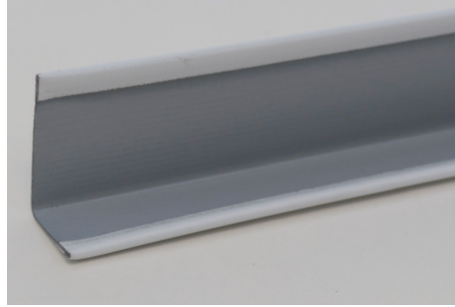


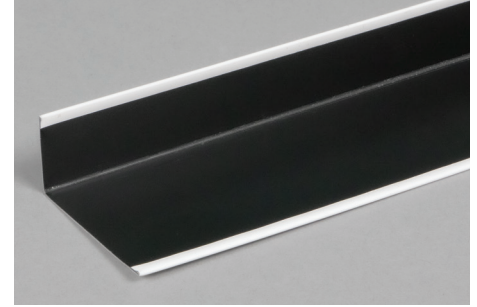
## 7/8" WALL ANGLE



## 9/16" WALL ANGLE



## 2" WALL ANGLE

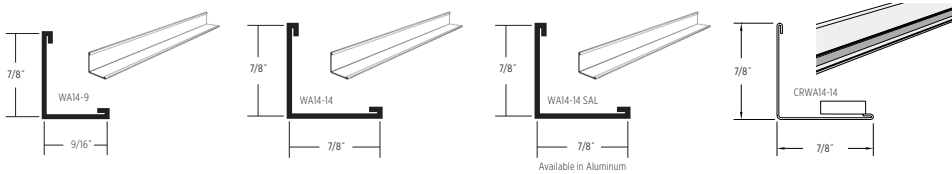


Create a smooth transition from ceiling to walls with wall angle products. Choose standard wall angles for popular interior designs or incorporate shadow moldings along perimeters for a reveal-edge look.

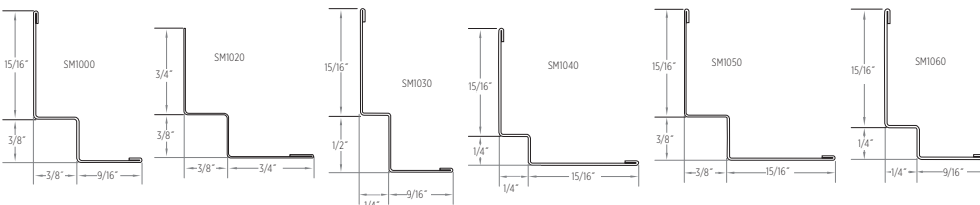
### FEATURES AND BENEFITS

- Variety of wall angle products lends design and installation flexibility
- Standard wall angles to complement popular interior designs
- Shadow moldings produce a reveal-edge look at perimeter installations
- Aluminum wall molding available for high-moisture applications
- Seismic-compliant options
- High recycled content
- Available in Standard White and Black. Additional color options are offered through our Post-Paint process. See the Visual Options - Suspension Systems page for color option details.
- WA14-14SAL available in Standard White only. Additional color options are offered through our Post-Paint process.

### WALL ANGLE



### SHADOW MOLDING



## LEED® v4

RECYCLED CONTENT	53-88%	
	PRE: 9-19%	POST: 44-69%

- ✓ MR: PBT Source Reduction (Healthcare)
- ✓ MR: Sourcing Raw Materials
- ✓ MR: Construction and Demolition Waste Management Planning

LEED® is a registered trademark of the U.S. Green Building Council.

# WALL ANGLE PRODUCTS

	DIMENSIONS IN. (MM)	THICKNESS IN. (MM)	PIECES/CARTON	FT./CARTON	RECYCLED CONTENT PRE*	RECYCLED CONTENT POST*	RECYCLED CONTENT TOTAL*
<b>STANDARD WALL ANGLE</b>							
WA14-9	144 x 7/8 x 9/16 (3660 x 22 x 15)	0.018 (0.46)	40	480	19%	69%	88%
WA14-14	144 x 7/8 x 7/8 (3660 x 22 x 22)	0.018 (0.46)	40	480	19%	69%	88%
WA14-14-10	120 x 7/8 x 7/8 (3050 x 22 x 22)	0.018 (0.46)	40	400	19%	69%	88%
WA32-15	120 x 15/16 x 2 (3050 x 24 x 50)	0.018 (0.46)	20	200	19%	69%	88%
WA32-15-12	144 x 15/16 x 2 (3660 x 24 x 50)	0.018 (0.46)	20	240	19%	69%	88%
WA32-32	120 x 2 x 2 (3050 x 50 x 50)	0.018 (0.46)	20	200	19%	69%	88%
WA32-32-12	144 x 2 x 2 (3660 x 50 x 50)	0.018 (0.46)	20	240	19%	69%	88%

<b>SPECIALTY WALL ANGLE - ALUMINUM</b>							
WA14-14SAL	144 x 7/8 x 7/8 (3660 x 22 x 22)	0.020 (0.51)	40	480	9%	44%	53%

<b>CLEANROOM WALL ANGLE</b>							
CRWA14-14	144 x 7/8 x 7/8 (3660 x 22 x 22)	0.020 (0.51)	40	480	19%	69%	88%

<b>SHADOW MOLDING</b>							
SM1000	120 x 15/16 x 3/8 x 3/8 x 9/16 (3050 x 24 x 10 x 10 x 15)	0.020 (0.51)	40	400	19%	69%	88%
SM1020†	120 x 3/4 x 3/8 x 3/8 x 3/4 (3050 x 19 x 10 x 10 x 19)	0.018 (0.46)	40	400	19%	69%	88%
SM1030	120 x 15/16 x 1/2 x 1/4 x 9/16 (3050 x 24 x 13 x 6 x 15)	0.019 (0.48)	40	400	9%	44%	53%
SM1040	120 x 15/16 x 1/4 x 1/4 x 15/16 (3050 x 24 x 6 x 6 x 24)	0.019 (0.48)	40	400	9%	44%	53%
SM1050	120 x 15/16 x 3/8 x 3/8 x 15/16 (3050 x 24 x 10 x 10 x 24)	0.019 (0.48)	40	400	9%	44%	53%
SM1060	120 x 15/16 x 1/4 x 1/4 x 9/16 (3050 x 24 x 6 x 6 x 15)	0.019 (0.48)	40	400	9%	44%	53%

\*Maximum recycled content percentage. Recycled content varies by manufacturing location.

†SM1020 is not hemmed along side A.

All products except WA14-14SAL are also available in black by ordering by item number followed by color code. Example: WA14-14 BLK.

## PHYSICAL DATA

### MATERIAL

Profile dependent

### PROFILE HEIGHT

Profile dependent

### WARRANTY

10-year Limited Suspension Systems warranty increases to 15 years when installed with CertainTeed ceiling panels. Full warranty information can be found at [certainteed.com/ceilings](http://certainteed.com/ceilings).

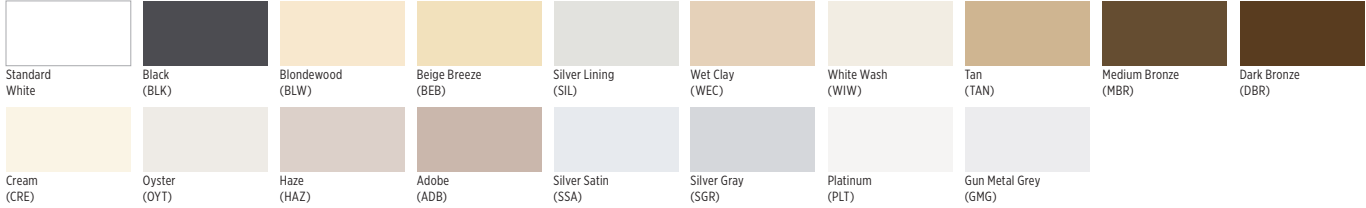
# WALL ANGLE PRODUCTS

## VISUAL OPTIONS – SUSPENSION SYSTEMS

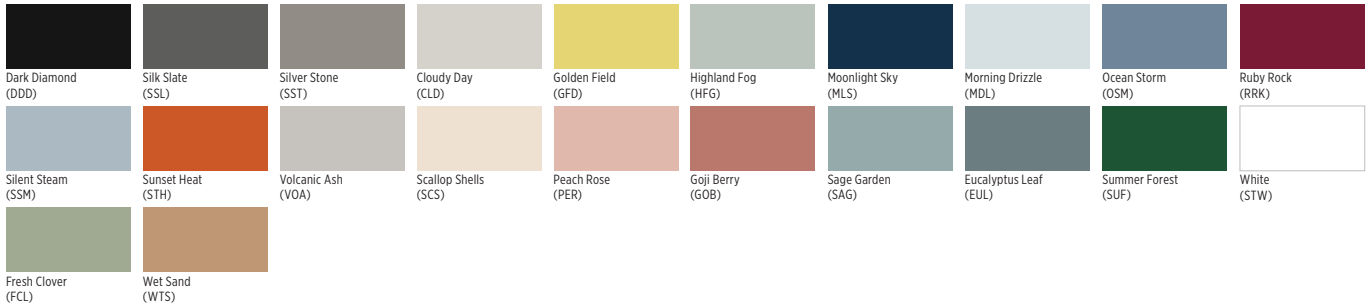
### ACOUSTICAL AND DRYWALL SUSPENSION SYSTEMS AND TERMINUS TRIM

Our newly expanded post-paint process allows for any CertainTeed Suspension System product to be painted in a variety of new colors, matching all CertainTeed colors along with any Sherwin-Williams® colors requested by the customer. We can also match any color if a color sample is provided.

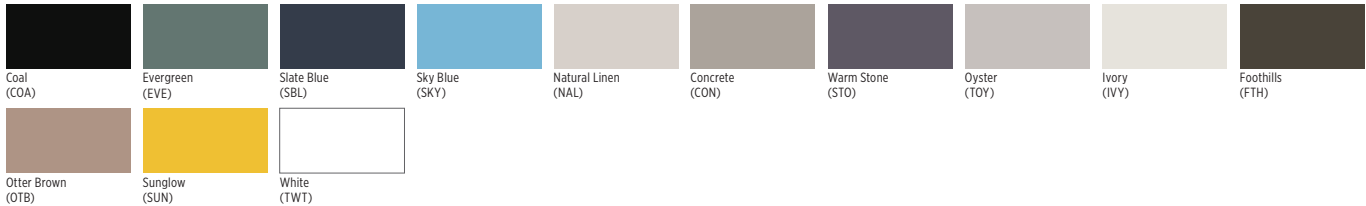
#### CERTAINTEED STANDARD



#### ECOPHON®



#### TECHSTYLE COLOR



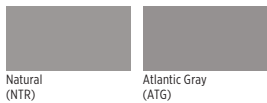
#### TECHSTYLE WOOD



#### TECHSTYLE FELT



#### METAL CEILINGS



For Special color options, contact your local sales representative.

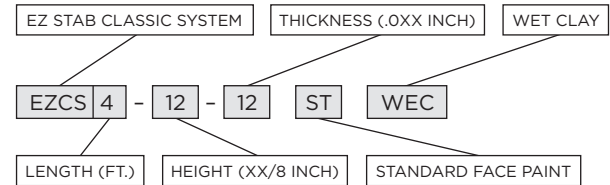
The colors shown have been reproduced with all the fidelity possible with commercial printing processes. Also, a specific color may appear different on one class of product than another.

When placing an order for either Standard or Special colors, please use the following naming process preceding each catalog code:

- Standard face paint: ST + 3-letter color code
- Standard 360 paint: 3T + 3-letter color code
- Special face page: SP + 3-letter color code
- Special 360 paint: 3P + 3-letter color code

**Example:**  
EZCS4-12-12 ST WEC

#### Example: EZCS4-12-12 ST WEC



### CertainTeed ARCHITECTURAL

METAL • WOOD • FELT • FIBERGLASS & MINERAL FIBER • GYPSUM • SUSPENSION & INTEGRATED SYSTEMS  
20 Moores Road, Malvern, PA 19355 800-233-8990 CertainTeed.com/Architectural