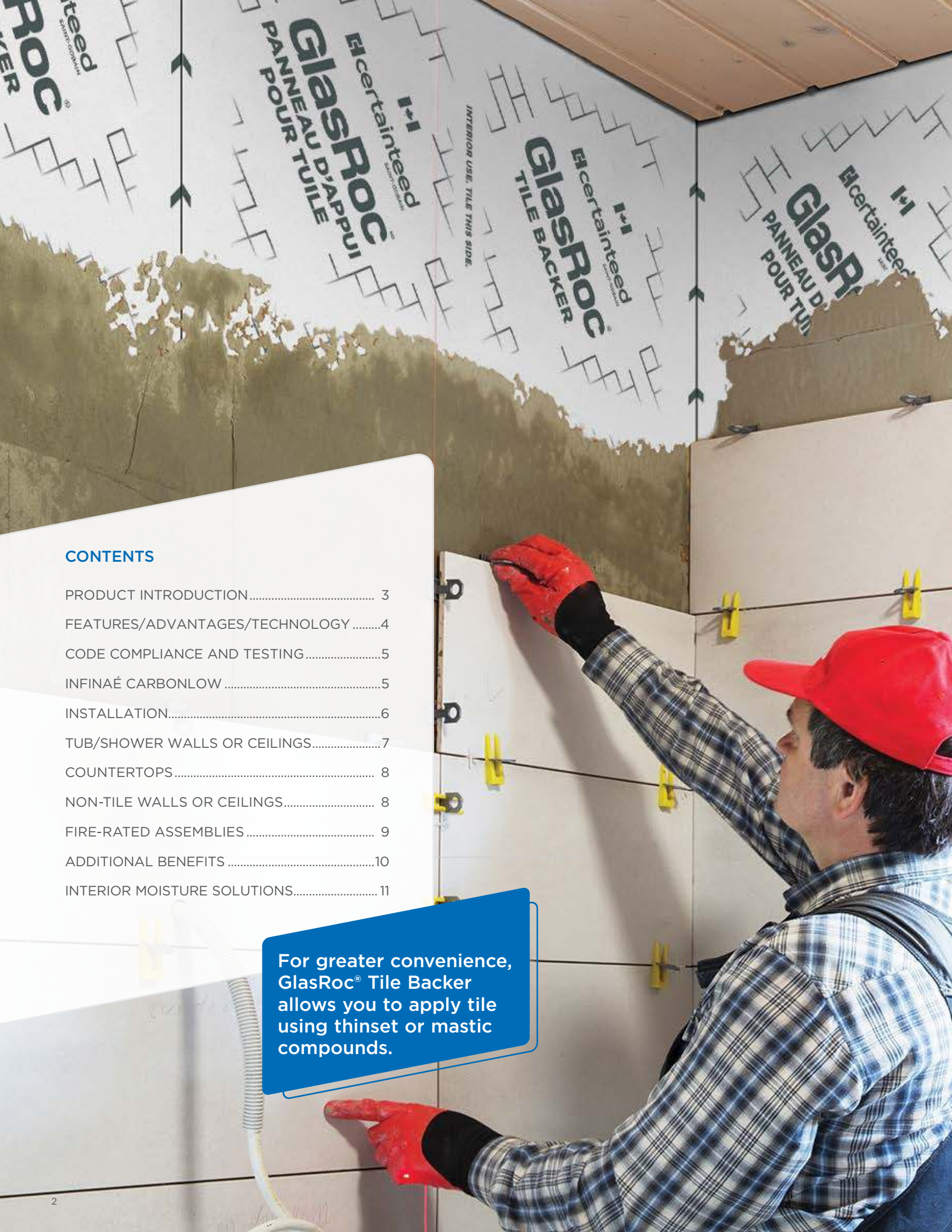




GlasRoc® Tile Backer





CONTENTS

PRODUCT INTRODUCTION..... 3

FEATURES/ADVANTAGES/TECHNOLOGY4

CODE COMPLIANCE AND TESTING.....5

INFINAÉ CARBONLOW5

INSTALLATION.....6

TUB/SHOWER WALLS OR CEILINGS.....7

COUNTERTOPS..... 8

NON-TILE WALLS OR CEILINGS..... 8

FIRE-RATED ASSEMBLIES 9

ADDITIONAL BENEFITS10

INTERIOR MOISTURE SOLUTIONS..... 11

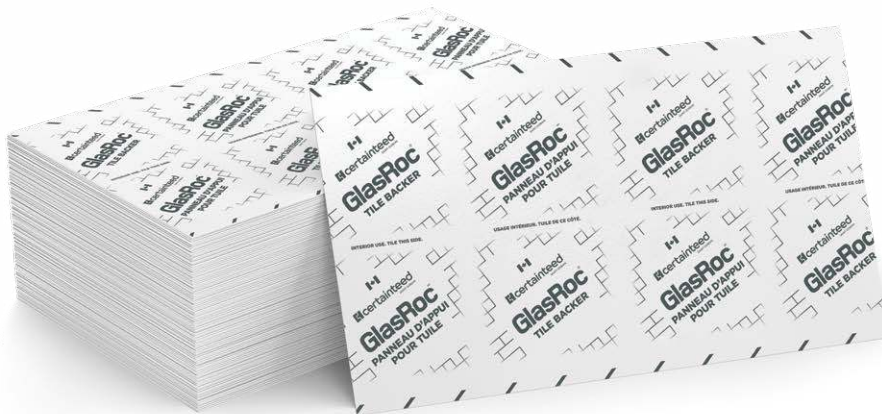
For greater convenience,
GlasRoc® Tile Backer
allows you to apply tile
using thinset or mastic
compounds.

GlasRoc® Tile Backer

REGULAR AND TYPE X DRYWALL

GlasRoc® Tile Backer and GlasRoc® Tile Backer Infinaé™ CarbonLow™ are superior tile substrates for walls, ceilings and countertops, specially designed to meet the demands of high-moisture areas.

GlasRoc® Tile Backer Infinaé™ CarbonLow has up to 60% less embodied carbon (cradle-to-gate) than a traditional equivalent product, while keeping the same quality and performance — an industry first!



Designed with a moisture-resistant gypsum core with fibreglass facers, GlasRoc Tile Backer provides increased mould resistance, and is well-suited for tile and non-tile installations in wet and non-wet applications, areas of high humidity and for fire-rated assemblies.



GlasRoc® Tile Backer

FEATURES

- Specially formulated water-resistant core.
- Excellent fire-resistance properties, and numerous fire-rated designs.
- Conformity to design and code requirements.
- Lifetime Limited Warranty for residential applications.
- 20 Year Limited Warranty for commercial applications.
- Meets ASTM C1178, which is recognized by the Tile Council of North America (TCNA).
- Reduced surface alkalinity versus conventional cement board.

ADVANTAGES

- Achieves best possible score of 10 out of 10 for mould resistance per ASTM D3273.
- Up to 30% lighter weight than conventional cement backer boards.
- Cuts like regular gypsum board and is easy to handle and install — with minimal skin irritation.
- Low VOCs; GREENGUARD® Gold Certified.
- Produces low dust; excluded from "Table 1" of the OSHA Crystalline Silica Rule.

GLASROC® PRODUCTS - ENGINEERED TECHNOLOGY

CertainTeed's GlasRoc® products feature unique engineered glass mat technology.

The GlasRoc offering provides:

- Water-resistant, paperless surface that is designed to meet the requirements of the application.
- Numerous fire-rated assembly designs for safety and performance.
- Moisture and mould resistance for protection and durability.
- Lightweight and designed to cut like regular gypsum board for ease of installation.

TECHNICAL PROPERTIES

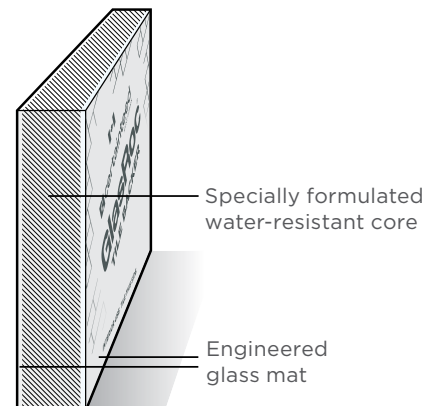
PROPERTIES	GLASROC® TILE BACKER 12.7 mm (1/2")	GLASROC® TILE BACKER TYPE X 15.9 mm (5/8")
Sizes Available*	1220 mm x 2440 mm (4' x 8') 813 mm x 1524 mm (32" x 5')	1220 mm x 2440 mm (4' x 8')
Weight - kg/m ² (lb/sq.ft.)	9.28 (1.9)	12.21 (2.5)
Flame Spread / Smoke Developed***	0/0	0/0
Mould Resistance Rating**	10	10
Standard Specification	ASTM C1178	ASTM C1178

* Other lengths available. Ask your CertainTeed sales representative.

** No mould growth detected. Note that 10 is highest rating possible.

*** Tested per ASTM E84, CAN/ULC-S102.

Noncombustible per E136 and CAN/ULC-S114.



Incorporating moisture-resistant materials extends the lifespan of interior finishes and reduces long-term maintenance and repair costs, making them essential for reliable, high-performance construction.

CODE COMPLIANCE AND TESTING STANDARDS

GlasRoc® Tile Backer is IRC, IBC and National Building Code of Canada compliant in 12.7 mm (1/2") and 15.9 mm (5/8") thicknesses and meets ASTM C1178 as a glass mat water-resistant gypsum backing panel for use as a tile backer, as recognized by the Tile Council of North America (TCNA).

Mould Resistance Test – When tested in accordance with ASTM D3273, GlasRoc Tile Backer exhibited no evidence of mould or fungal growth after a period of 28 days of exposure, yielding a rating of 10, the best level of performance for mould resistance.

Under certain job site conditions, mould resistance for building products may produce different results than those achieved in a controlled, laboratory setting; however, when handled properly, using appropriate design methods and construction practices, CertainTeed's engineered glass mat technology provides increased mould resistance compared to standard moisture resistant paper faced wallboard.

GlasRoc Tile Backer meets ASTM C1178, which is referenced by the Tile Council of North America (TCNA).



An EASY switch: same trusted performance with **up to 60% reduced GWP cradle-to-gate!** That means, you don't have to spend time changing or reviewing product attribute details, fire ratings, sound ratings, etc.

That's More to Love About Your Favourite Gypsum Solutions!

Easi-Lite® | Type X | M2Tech® | GlasRoc®



Reach out to your local architectural solutions manager for help on specifying the products.

From North America's **FIRST Zero Carbon*** Drywall Production Facility in Montreal.

*Scopes 1 & 2

REIMAGINE DESIGN AND CONSTRUCTION

Saint-Gobain Canada is also reimagining design and construction to better manage our resources through circular business practices — such as 20%+ post-consumer recycled content in CertainTeed's Vancouver drywall plant and up to 80% recycled glass in its Ottawa insulation plant — further reinforcing its commitment to **Making the World a Better Home.**

2050

NET ZERO CARBON

- ✓ Offer the **best low-CO₂ and sustainable solutions** in our markets
- ✓ Enable our **customers to decarbonize** their processes



Find the LCA Action Plan document and other information at certainteed.ca/lowcarbonpanel or scan the QR code



GlasRoc® Tile Backer

CUTTING AND INSTALLATION

CUTTING GLASROC TILE BACKER

GlasRoc® Tile Backer can be scored and cut with a standard utility knife and requires no special tools. Working from the printed logo side, pieces snap after scoring only one face. After cutting panels to required size, make cutouts and then snug fit ends and edges, being certain not to leave gaps between panels.

INSTALLATION

- When used as a tile substrate for walls, minimum 33mils/0.836mm (20 gauge) steel or wood framing should not exceed 406 mm (16") o.c. without blocking for 12.7 mm (1/2"); or 610 mm (24") o.c. for 15.9 mm (5/8"). Panels can be applied horizontally or vertically.
- When used as a tile substrate for ceilings, panels should be applied perpendicular to framing. Framing should be spaced no greater than 300 mm (12") o.c. for 12.7 mm (1/2") thickness or 406 mm (16") o.c. for 15.9 mm (5/8") thickness. For walls and ceilings, fasteners should be spaced 200 mm (8") o.c. on wood or metal framing. Drive fasteners flush with the surface and do not countersink.
- Use 38 mm (1-1/2") galvanized roofing nails for 12.7 mm (1/2") and 44 mm (1-3/4") for 15.9 mm (5/8") GlasRoc Tile Backer or for 12.7 mm (1/2") GlasRoc Tile Backer, use 38 mm (1-1/2") (minimum) corrosion-resistant backerboard screws. For 15.9 mm (5/8") GlasRoc Tile Backer, use 41 mm (1-5/8") (minimum) corrosion-resistant backerboard screws.

- Using nominal 50 mm (2") wide alkali-resistant fibre glass mesh tape, bed tape on all joints and corners with material used to set tiles. Apply sealant to seal fixture and plumbing penetrations and abutments to dissimilar materials.
- If GlasRoc Tile Backer meets gypsum board outside the shower, and tiles extend beyond the gypsum board joint and GlasRoc Tile Backer, apply nominal 50 mm (2") wide alkali-resistant fibre glass mesh tape to the joint and skim with latex-modified thinset.
- If GlasRoc Tile Backer meets gypsum board outside the shower, and tiles end before the gypsum board joint and GlasRoc Tile Backer, apply nominal 50 mm (2") wide fibre glass mesh tape to the joint and skim with setting type joint compound, such as CertainTeed M2Tech® 90, in order to create a smooth, paintable surface.

Special Notes:

- A water-resistant barrier is recommended in wet areas before tile application. This is especially important in tub and/or shower enclosures due to the higher humidity levels and potential vapour drive from the interior space to the exterior.

Water-resistant barriers, such as Custom Building Products RedGuard®, Laticrete HYDROBAN®, and Mapei® Mapelastic® AquaDefense are tested and approved for use with GlasRoc Tile Backer.

If a water resistant barrier is applied, follow the water resistant barrier manufacturers installation requirements for application of the water resistant barrier and tile setting material.

- Do not use all-purpose joint compound or paper tape in wet areas. Use nominal 50 mm (2") wide alkali-resistant fibre glass mesh tape.
- In all corners, prior to applying the mesh tape, apply a small bead of flexible sealant meeting ASTM C920 to the joint without spreading it over the face of GlasRoc.
- Do not use GlasRoc Tile Backer as a base for nailing and mechanical fastening.
- Do not laminate GlasRoc Tile Backer directly to concrete or masonry block. Framing or furring of wall is necessary.
- The Tile Council of North America (TCNA) references period maintenance and inspection through the Approved American National Standards (ANSI) specifications. CertainTeed supports the TCNA references and recommends periodic maintenance, inspection, and repair (when necessary) of system components including, but not limited to, grout, caulking, and sealants.

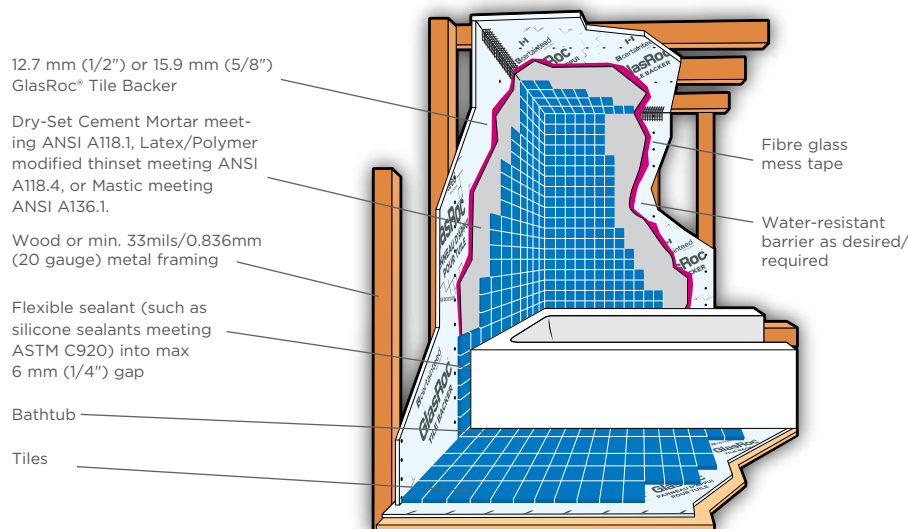


Diagram 1

GlasRoc Tile Backer is ideal backing for laminate-faced panels or fibreglass tub and shower units to provide impact, fire and sound resistance.

GlasRoc® Tile Backer

BATHTUB, SHOWER WALLS AND CEILINGS

SHOWER RECEPTORS

Before installing GlasRoc® Tile Backer on walls (see Diagram 2), the shower pan or rubber membrane must be adequately sloped to the main drain or weep-hole so as not to impede proper water drainage.

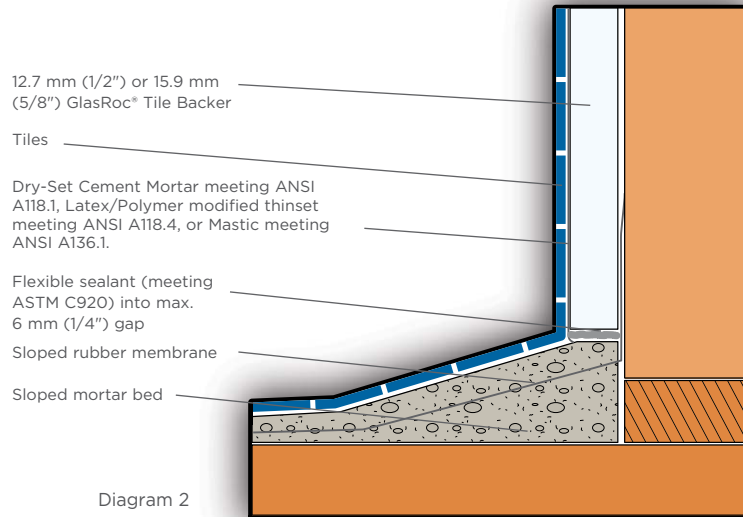
For showers with curbs, a waterproof membrane must be applied up walls for a minimum of 75 mm (3") and a maximum of 152 mm (6") above the finished curb. GlasRoc Tile Backer should not be used in the curb.

For showers without curbs, a waterproof membrane should be applied up walls for a minimum of 152 mm (6") and a maximum of 200 mm (8"). Satisfactory blocking should be applied at the bottom framing (e.g., wood).

Special Notes:

- Do not place GlasRoc Tile Backer into the shower mortar bed. Leave a maximum 6 mm (1/4") gap and fill with flexible sealant meeting ASTM C920.

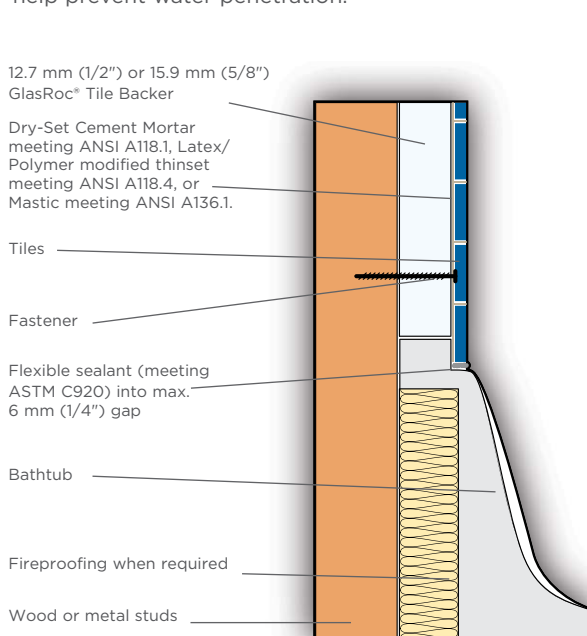
If a water resistant barrier is applied, follow the water resistant barrier manufacturers installation requirement for tile setting material.



BATHTUB OR SHOWER RECEPTOR

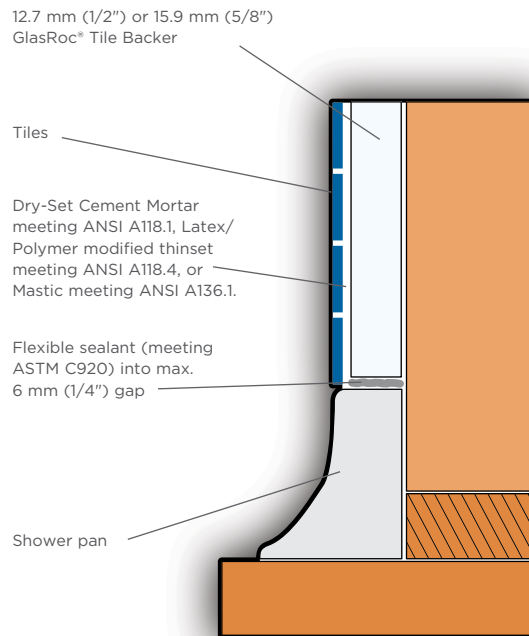
GlasRoc Tile Backer may be applied on walls horizontally or vertically.

Thoroughly filling the space between the tile and tub with a flexible sealant will help prevent water penetration.



SHOWER PAN

Additional Notes: GlasRoc Tile Backer may be applied on walls horizontally or vertically.



GlasRoc® Tile Backer

COUNTERTOPS

When using GlasRoc® Tile Backer on countertops (see Diagram 5), a minimum 18.3 mm (23/32") exterior glue plywood base must first be installed flat and level, followed by a bedding coat of latex-modified thinset on the plywood using a 6 mm x 6 mm x 6 mm (1/4" x 1/4" x 1/4") notched trowel. Framing spacing should not exceed 610 mm (24") o.c. Overhangs, expansion/control joints on cantilever counters must be supported to prevent movement.

Apply clean, dry GlasRoc Tile Backer to the base prior to the leveling material setting up. Fasten panel every 152 mm to 200 mm (6" to 8") o.c. in both directions, using 32 mm (1-1/4") galvanized roofing nails or 32 mm (1-1/4") corrosion-resistant backerboard screws.

Stagger joints of GlasRoc Tile Backer panels with those of the plywood base, butting joints tightly. Tape all joints and corners using nominal 50 mm (2") wide self-adhering, alkali-resistant fibre glass mesh tape and embed the tape with latex cement mortar that meets ANSI A118.4.

Install tile using latex-modified thinset, expansion/control joints and grout in accordance with ANSI A108.

Use a waterproof membrane (ANSI A118.10) to seal edge and bottom of plywood overhang at face of counter and all other plywood surfaces and edges that will be exposed to water or moisture, especially around automatic dishwashers.

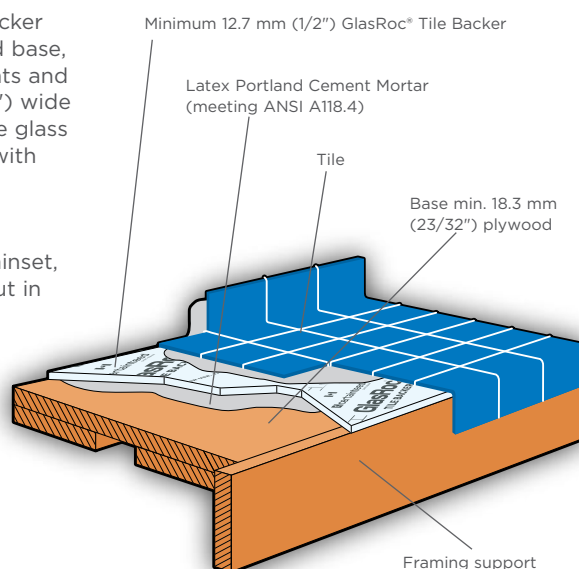


Diagram 5

NON-TILE WALLS OR CEILINGS

NON-TILE, NON-WET, HIGH-HUMIDITY AREAS

GlasRoc Tile Backer may also be used in interior non-tile areas that do not come in contact with water, but that experience exposure to high levels of humidity intermittently, such as areas outside tubs and showers in residential construction (see Diagram 6).

For walls, wood framing or steel (18 mils/.455 mm [25 gauge]) should be spaced no greater than 406 mm (16") o.c. for 12.7 mm (1/2") GlasRoc Tile Backer and 610 mm (24") o.c. for 15.9 mm (5/8") GlasRoc Tile Backer. For ceilings, GlasRoc Tile Backer should be installed perpendicular to framing with framing spaced no greater than 300 mm (12") o.c. for 12.7 mm (1/2") thickness and 406 mm (16") o.c. for 15.9 mm (5/8") thickness.

Apply nominal 50 mm (2") wide fibre glass mesh tape over joints and angles, embedding the tape in a setting-type joint compound, such as CertainTeed's mould resistant M2Tech® 90 Setting Compound. Using a trowel, apply a heavy skim coat to the entire panel with the compound to create a smooth surface for paint or wallpaper application. If necessary to create a suitably smooth surface, apply an additional medium skim coat of all purpose joint compound, such as CertainTeed

All-Purpose or Lite All-Purpose ready-mixed joint compounds. Before applying paint or wallpaper, the surface should be primed for high-moisture areas as recommended by the product's manufacturer for applications over setting type joint compound.

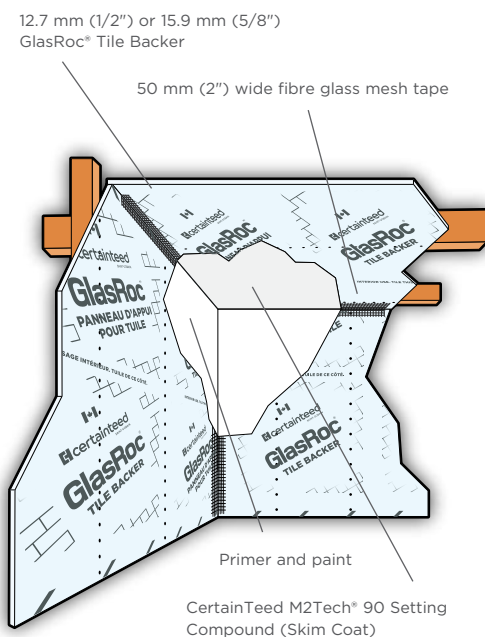


Diagram 6

FINISHING PRODUCTS



CertainTeed Lite Taping



CertainTeed Lite All-Purpose



CertainTeed Pro-Fil™ 90



CertainTeed M2Tech® 90 Setting Compound



CertainTeed All-Purpose



CertainTeed Mould Resistant Lite All-Purpose



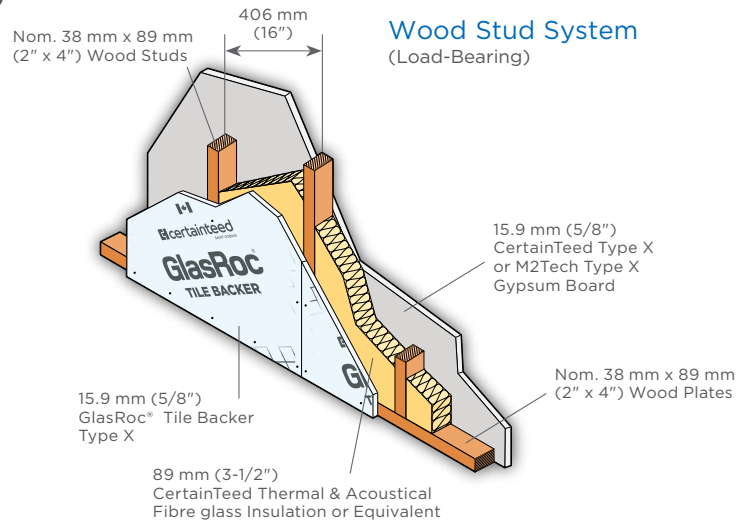
FibaFuse™ Paperless Drywall Tape

GlasRoc® Tile Backer

FIRE-RATED ASSEMBLIES

GLASROC® TILE BACKER TYPE X: THE ULTIMATE CHOICE

- CertainTeed offers over 180 Type X fire-rated designs in the GlasRoc® family.
- 15.9 mm (5/8") GlasRoc® Tile Backer meets Type X requirements.
- Tile installation is not required to achieve a 1- or 2-hour fire rating.
- Aligns perfectly with 15.9 mm (5/8") CertainTeed Type X and M2Tech® Type X gypsum board and is ULC/cUL Classified.
- The UL/cUL/ULC Type Designation for 15.9 mm (5/8") GlasRoc Tile Backer Type X is Type GlasRoc.



TEST REFERENCE: cUL U305

Partition Thickness: 120.7 mm (4-3/4")
Weight: 33.2 kg/m² (6.8 ft²) 15.9 mm (5/8")

GlasRoc® Tile Backer Type X applied parallel or at right angles to minimum 38 mm x 89 mm (nominal 2 x 4) wood studs 406 mm (16") o.c. with 50 mm (2") cement coated nails, 48 mm (1-7/8") long, 175 mm (7") o.c. Joints staggered each side and covered with nominal 50 mm (2") wide 10 x 10 alkali-resistant fibre glass mesh tape and tile adhesive. (Load bearing).



TEST REFERENCE: cUL U301

Partition Thickness: 152 mm (6")
Weight: 58.6 kg/m² (12.0 ft²)
Base Layer: 15.9 mm (5/8")

CertainTeed Type X, M2Tech® Type X or GlasRoc Tile Backer Type X gypsum board. Base layer attached horizontally or vertically to minimum 38 mm x 89 mm (nominal 2x4) wood studs 406 mm (16") o.c. with 32 mm (1-1/4") screws at 200 mm (8") o.c.

Face Layer: 15.9 mm (5/8") GlasRoc Tile Backer Type X applied horizontally or vertically. Face layer attached to studs over base layer with 48 mm (1-7/8") screws spaced 200 mm (8") o.c. Vertical joints located over studs. All joints in face layers staggered with joints in base layers. Joints of each base layer offset with joints of base layer on opposite side. (Load bearing)



TEST REFERENCE: cUL U411

Partition Thickness: 127 mm (5")
Weight: 53.7 kg/m² (11 ft²)
Base Layer: 15.9 mm (5/8")

CertainTeed Type X, M2Tech® Type X or GlasRoc Tile Backer Type X gypsum board applied parallel to each side of 64 mm (2-1/2") metal studs 600 mm (24") o.c. with 25 mm (1") Type S screws 406 mm (16") o.c.

Face Layer: 15.9 mm (5/8") GlasRoc Tile Backer Type X applied parallel to each side of studs with 41 mm (1-5/8") Type S screws 406 mm (16") o.c. at edge joints, 300 mm (12") o.c. at perimeter and intermediate studs. Stagger joints 600 mm (24") o.c. each layer and side. (Non-load bearing)

See "UL Fire Resistance Directory" for additional fire-rated assemblies.



GlasRoc® Tile Backer Benefits

BETTER PHYSICAL PERFORMANCE

Tested in accordance with ASTM C1178, GlasRoc® Tile Backer meets or exceeds all physical property requirements for this standard.

ENHANCED DIMENSIONAL STABILITY

GlasRoc Tile Backer resists delamination, rippling, buckling and sagging related to environmental conditions, such as changes in temperature and relative humidity. GlasRoc Tile Backer will provide a flat and uniform substrate for tile applications. To back it up, CertainTeed provides a lifetime limited warranty for residential applications and a 20 year limited warranty for commercial applications.

ENHANCED FIRE PROTECTION

Testing in accordance with ASTM E136 and CAN/ULC-S114 proves that GlasRoc Tile Backer Type X is noncombustible and offers superior fire performance. It achieves a flame-spread/smoke developed rating of 0/0 when tested per ASTM E84, CAN/ULC-S102. GlasRoc Tile Backer Type X is ULC/cUL Classified for Fire resistance for use in fire rated designs. (ULC/cUL Designation-GlasRoc)

EASY TO HANDLE AND INSTALL

GlasRoc Tile Backer is handled and installed like regular paper-faced gypsum. In addition, it:

- Is significantly lighter than conventional cement board, resulting in lower installation cost.
- Can be scored and cut with a standard utility knife. No power tools required, reducing the amount of particle dust versus conventional cement board.

- Snaps free after scoring only one face
- Easier to handle because skin irritations are minimized due to an engineered glass mat and our innovative coating on the face.
- Features uniform field and edge hardness, making trimming and fastening quick and easy, as well as, reducing occurrence of overdriven fasteners.

LOW VOCS

GlasRoc Tile Backer is GREENGUARD® Gold Certified.

MOISTURE AND MOULD RESISTANCE

When tested in accordance with ASTM D3273, GlasRoc Tile Backer exhibited no evidence of mould after a period of 28 days of exposure, yielding a rating of 10, the best rating possible.

INCREASED DURABILITY

GlasRoc Tile Backer resists delamination creating a more durable, dimensionally stable panel.

STANDARDS AND CODE COMPLIANCE

GlasRoc Tile Backer conforms to ASTM C1178 standards for glass mat water-resistant gypsum backing panel for use as a tile backer. Installation standards, where applicable, are per the Tile Council of North America Inc.'s TCNA Handbook for Ceramic, Glass and Stone Tile Installation for glass mat water-resistant gypsum backer board.

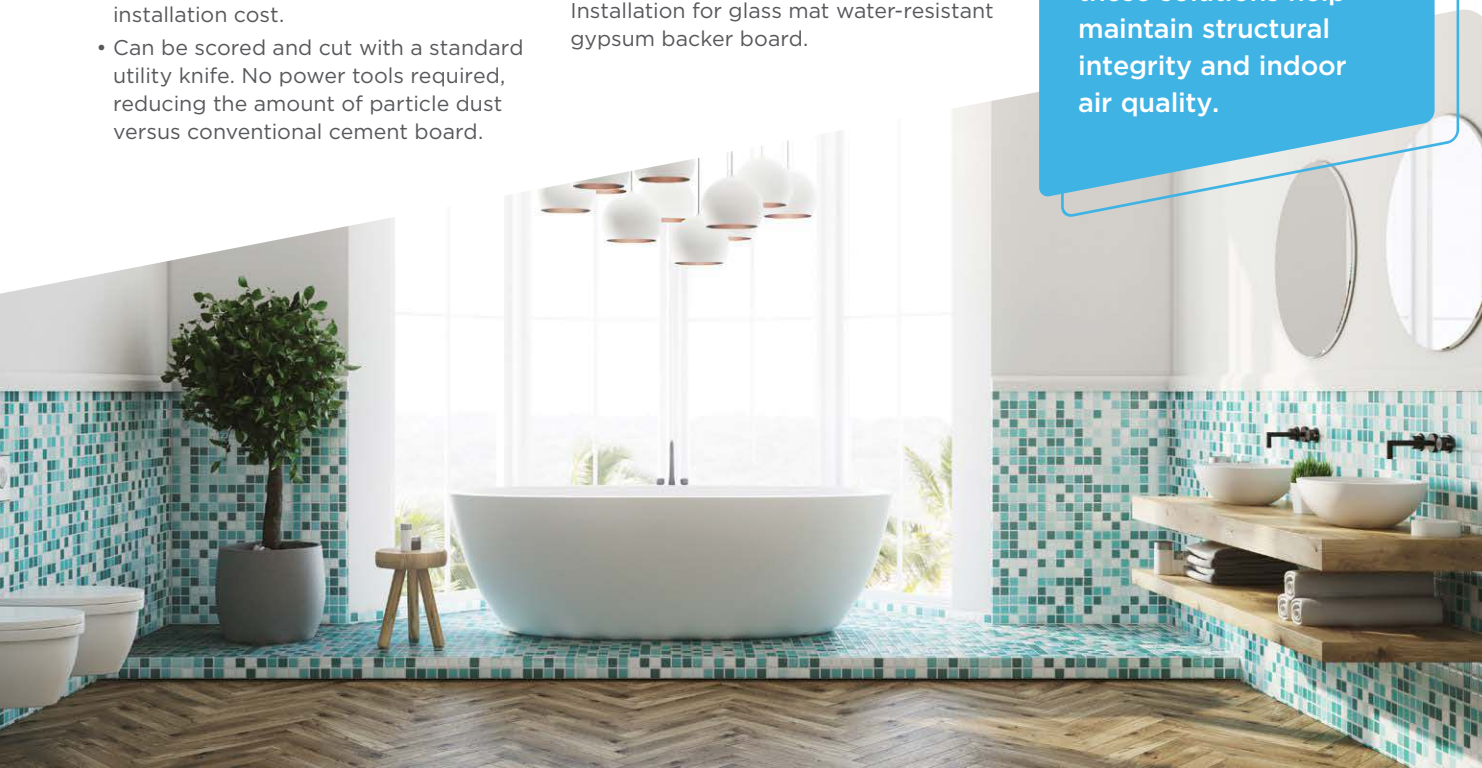
BIM/CAD INFORMATION

The BIM and CAD UL fire rated assemblies and sound assemblies can be found on CertainTeed's BIM and CAD Design Studio at bimlibrary.saint-gobain.com. CertainTeed's BIM and CAD Design Studio provides BIM and CAD details to many UL fire rated assemblies and sound assemblies in an easy to view experience. Plus, downloadable Revit and DWG and PDF CAD Details are available.

SUSTAINABILITY

Can contribute to the Canada Green Building Council's LEED Credit Qualification in several credit categories to assist in obtaining LEED certification. Sustainable documentation, including recycled content, EPD's, HPD's, VOC Certifications, can be found at saintgobain.ecomedes.com.

Moisture-resistant products play a vital role in protecting interior spaces from damage caused by humidity and condensation. By preventing mould growth, warping, and material deterioration, these solutions help maintain structural integrity and indoor air quality.



Interior Moisture Solutions

Moisture-resistant building products play a vital role in protecting interior spaces from damage caused by humidity and condensation. By preventing mould growth, warping, and material deterioration, these solutions help maintain structural integrity and indoor air quality. Incorporating moisture-resistant materials also extends the lifespan of interior finishes and reduces long-term maintenance and repair costs, making them essential for reliable, high-performance construction.

M2TECH® MOISTURE AND MOULD RESISTANT DRYWALL PANEL



NO-COAT® PRO AUTOMATED DRYWALL CORNER SYSTEM



GLASROC® TILE BACKER



FIBAFUSE® DRYWALL TAPE



M2TECH® 90 MOISTURE AND MOULD RESISTANT SETTING COMPOUND



GlasRoc® Tile Backer

Regular and Type X Drywall Panels



- Lifetime limited warranty for residential tile installations.
- 20 year limited warranty for commercial tile installations.
- Economical and efficient installation.
- Scores and snaps like standard drywall panels.
- Scores and snaps easily with no special handling required
- Up to 30% lighter weight than conventional cement backer boards.
- BIM/CAD Information UL fire rated assemblies and sound assemblies can be found on Certainteed's BIM and CAD Design studio at bimlibrary.saint-gobain.com/certainteed.
- Sustainable documentation, including recycled content, EPD's, HPD's, and VOC Certifications, can be found at saintgobain.ecomedes.com.

learn more at: glasroc.ca



USGBC® and the related logo are trademarks owned by the U.S. Green Building Council® and are used with permission.



The Health Product Declaration® logo is a trademark or service mark of Health Product Declaration Collaborative, Inc., in the United States and in other countries and is being used herein under license.



CertainTeed Canada

CEILINGS • GYPSUM • INSULATION • ROOFING • SIDING • TRIM

2424 Lakeshore Rd. West, Mississauga, ON L5J 1K4 800-233-8990 certainteed.ca